

EXHIBITOR PROSPECTUS

SOUTHERN PAIN SOCIETY

37th Annual Meeting

September 29 - October 1, 2023
Astor Crowne Plaza Hotel



New Orleans
Louisiana

Jointly provided by



SEAHEC
PART OF NC AHEC

RECRUIT
TRAIN
RETAIN

EXHIBIT HALL DATES & TIMES*

SET-UP GRAND BALLROOM

Friday, September 29th 9:00 AM

SHOW HOURS

Friday, September 29th 12:30 PM – 5:30 PM

Saturday, September 30th 7:00 AM – 6:00 PM
Networking Reception 5:00 PM – 6:00 PM

Sunday, October 1st 7:00 AM – 11:30 AM

TEAR DOWN

Sunday, October 1st 10:45 AM – 11:45 AM

*Hours subject to change

HISTORY

Now in its 37th year, The Southern Pain Society is an association of physicians and healthcare practitioners whose mission is to serve people with pain by advancing research and treatment and increase the knowledge of the regional professional community. We acknowledge that chronic pain is a interdisciplinary health issue that requires collaboration from multiple pain specialists. We welcome all professionals interested in the field of chronic pain including physicians, nurse practitioners, physician assistants, psychologists, nurses, therapists and other healthcare professionals.



SEAHEC
PART OF NC AHEC

RECRUIT
TRAIN
RETAIN

EXHIBIT INFORMATION

LOCATION

The Astor Crowne Plaza Hotel will host this year's meeting. To encourage optimum interaction, the Exhibit Hall will be located in conformity with the Standards for Integrity and Independence in Accredited Continuing Education, yet in proximity to sessions. The 2023 Corporate Members have priority booth placement in the pre-function area. The exhibit area(s) will serve as the venue for all refreshment breaks and will host the Saturday, September 30th Networking Reception and Poster Presentations.

HOTEL ACCOMMODATIONS

On behalf of the meeting participants, the meeting organizers have reserved sleeping rooms at the Astor Crowne Plaza Hotel at the significantly discounted rate of \$185 per night (+ state and local taxes). To ensure availability, please reserve your room as soon as possible by calling Reservations at 877-408-9661 and mention the Southern Pain Society to obtain the special rate. You can also book online at southernpainsociety.org. Please reserve by September 14th, 2023 to take advantage of the group rate.

EXHIBIT TABLE OR POP UP COST/PAYMENT

- Cost for one 6' table top exhibit space is \$2,500 and includes two (2) complimentary representative badges.
- Cost for one 10' x 10' square exhibit space is \$5,000 and includes three (3) complimentary representatives badges.
- Additional badges for additional representatives may be purchased for \$250 each.
- Representatives are invited to participate in the Networking Reception on Saturday, September 30th from 5-6pm.

REFUNDS AND CANCELLATIONS

Cancellations received in writing on or before September 1st, 2023 will be subject to a 30% administrative fee. There will be no refunds for cancellations after that date.

September 29 - October 1, 2023
Astor Crowne Plaza Hotel
New Orleans, LA

SPACE ASSIGNMENT

Space will be assigned in the order in which applications with payment are received. Corporate Members are given priority placement. Exhibitors wishing to avoid assignment of space adjacent to a particular competitor should indicate this on their application. The Program Committee reserves the right to alter the floor plan at any time without prior notice.

EXHIBIT SERVICES

On or about September 1st, 2023, the Southern Pain Society will issue a memorandum to registered exhibiting companies. The memorandum will contain all necessary information and order forms including:

- Shipping requirements, including information on the costs that the hotel may charge for incoming and outgoing cartons.
- Furniture, display and decorating specifications
- Electrical service request process

REGISTRATION LIST

All supporters and exhibitors will be provided with a demographic list which includes discipline, organization, city and state. It is the current policy of NC AHEC that specific participant data, including names, email addresses and phone numbers shall not be shared with vendors or supporters.

BADGE POLICY

All participants affiliated with exhibits must be registered. Each person will be issued an exhibitor badge and must be employed by the exhibitor or have a direct business affiliation.

CONDUCTING EXHIBITS

We follow the ACCME and ANCC standards and guidelines governing support of Healthcare Professionals. In addition, no drawings, raffles or quiz-type contests of any type will be permitted. Electrical or other mechanical apparatus must be muffled so noise does not interfere with other exhibitors. Character of the exhibits is subject to approval of the program committee. The right is reserved to refuse applications because of concerns over not meeting standards required or expected, as well as the right to curtail exhibits or parts of exhibits, which reflect against the character of the meeting. This applies to displays, literature, advertising, novelties, souvenirs, conduct of person, and other unreasonable activity.

INFRINGEMENT

Interviews, demonstrations and the distribution of literature or samples must be made within the area assigned to the exhibitor. Canvassing or distributing of advertising matter outside the exhibitor's own space will not be permitted and subjects the exhibitor to immediate dismissal from the meeting without refund.

SECURITY

A security guard will not be in the exhibit area when the exhibits are closed, and the safekeeping of the exhibitor's property shall remain the responsibility of the exhibitor. The Southern Pain Society, SEAHEC and the Astor Crowne Plaza Hotel are not responsible for theft, loss or damage which may occur and advise each exhibitor to be sure that stands, equipment and material is insured at full value and stored each evening for safe-keeping.

LIABILITY

Exhibitor acknowledges that the Southern Pain Society, its sponsors, and endorsers, the program committee, and/or meeting managers and the Astor Crowne Plaza Hotel do not maintain insurance covering the exhibitor's property and thus it is the sole responsibility and obligation of the exhibitor to obtain business interruption and property damage insurance covering such losses by exhibitor.

PROTECTION OF THE HOTEL BUILDING

Exhibitors will be held liable for any damage caused to the hotel property, and no material or matter of any kind shall be posted on, tacked, nailed, screwed or otherwise attached to columns, walls, floors or other parts or portions of the building or furnishings. Whatever may be necessary to properly protect the building, equipment or furniture will be installed at the expense of the exhibitor. If any controversy arises as to the need or propriety thereof, the Convention Service Manager of the Hotel will be the final judge thereof and his/her decision shall be binding on all parties concerned.

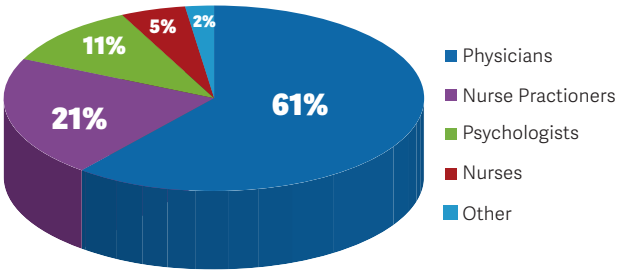


ACCME GUIDELINES RELATED TO THE SEPARATION OF PROMOTIONAL ACTIVITIES FROM EDUCATIONAL ACTIVITIES

In compliance with the Standards for Integrity and Independence in Accredited Continuing Education, all exhibiting companies must abide by the following:

- Exhibit and other promotional fees shall be separate and distinct from educational grants/commercial support.
- All exhibitors must be in a room or area separate from the education and the exhibits must not interfere, or in any way compete with the learning experience prior to, during, or immediately after the activity.
- All promotional activities including interviews, demonstrations, and the distribution of literature or samples must be made within the exhibitor’s space only. Canvassing or distributing promotional materials outside the exhibitor’s rented exhibit space is not permitted.
- Company representatives may attend educational sessions at Southern Pain Society’s discretion. However, representatives must refrain from holding any commercial discussions in the educational sessions.
- Monitoring - The separation of promotional materials and activities from the educational arena is strictly enforced throughout the activity by Southern Pain Society’s and SEAHEC’s onsite staff.
- All CME activities must abide by all Standards for Integrity and Independence in Accredited Continuing Education.

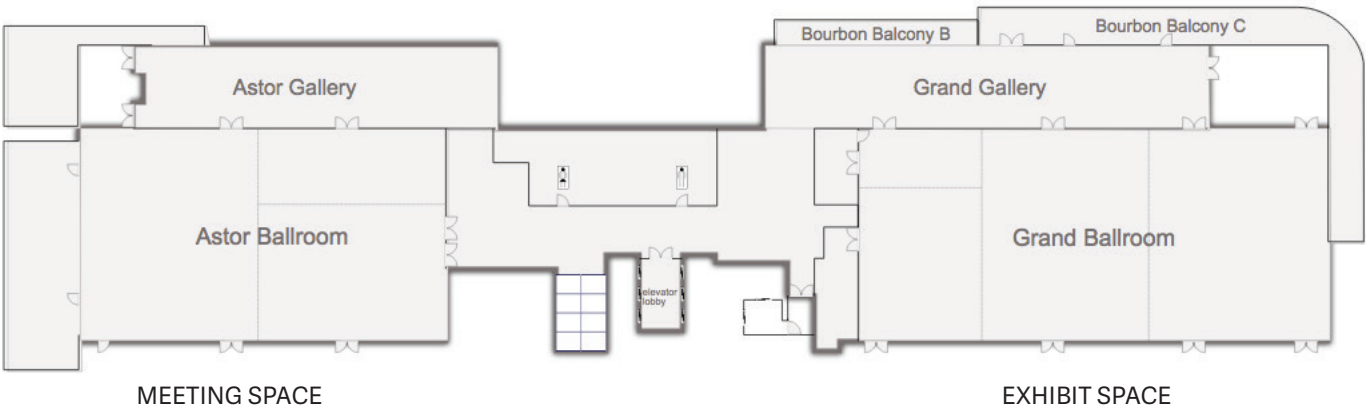
PARTICIPANT PROFILE



GEOGRAPHIC REACH

Alabama	Mississippi
Arkansas	New Jersey
California	North Carolina
Florida	Ohio
Georgia	Oregon
Illinois	South Carolina
Louisiana	Tennessee
Maryland	Texas
Minnesota	

ASTOR CROWNE PLAZA HOTEL 2ND FLOOR



ADDITIONAL SUPPORT OPPORTUNITIES

Platinum Corporate Membership (SPONSORED TALK)	\$18,000
<ul style="list-style-type: none">Membership Designation and corporate logo on websites and all print and electronic materials(2) Tabletop Exhibit Display in designated Corporate Member location(2) additional complimentary badges for a total of four (4) badges(1) Corporate Member Lunch Talk 60 Minute Session (No CME provided) (Saturday, September 30th 2023 from 12:00 -1:00 pm)<ul style="list-style-type: none">*e-blast of invitation to all attendeesTalk given during lunch provided by Southern Pain SocietyStandard audiovisual (screen, house sound, computer connection)Prominent poster on easel with your company indicated as supporterSponsored article and blog posting on our website	
Gold Corporate Membership (SPONSORED TALK)	\$11,000
<ul style="list-style-type: none">Membership designation and corporate logo included on websites, print and electronic materials(1) Tabletop Exhibit Display in designated Corporate Member location(2) additional complimentary badges for a total of four (4) badges(1) Corporate Member Showcase 45 minute Breakfast Session (No CME provided) (Only 2 available on Saturday, September 30th, 2023 and Sunday, October 1st, 2023, both 7 -7:45 am)<ul style="list-style-type: none">*e-blast of invitation to all attendeesTalk given during breakfast provided by Southern Pain SocietyStandard audiovisual (screen, house sound, computer connection)Prominent poster on easel with your company indicated as supporter	
Silver Corporate Membership (SPONSORED TALK)	\$7,000
<ul style="list-style-type: none">Membership Designation and corporate logo included on websites, print and electronic materials(1) Tabletop Exhibit Display in designated Corporate Member location(2) additional complimentary badges for a total of four (4) badges(1) Corporate Member Showcase 45 Minute Session (No CME provided) (Friday, September 29th, 2023 from 5:15 - 6:00 pm)<ul style="list-style-type: none">*e-blast of invitation to all attendeesTalk given during reception provided by Southern Pain SocietyStandard audiovisual (screen, house sound, computer connection)Prominent poster on easel with your company indicated as supporter	
Bronze Corporate Membership	\$4,500
<ul style="list-style-type: none">Membership Designation and logos included on websites, print and electronic materials(1) Tabletop Exhibit Display in designated Corporate Member Location(1) Additional complimentary badge for a total of three (3)	
Break (Friday PM, Sat AM, Sat PM or Sun AM)	\$3,000
<ul style="list-style-type: none">(1) Table Exhibit Display(1) Additional complimentary badge for a total of three (3)Prominent poster on easel with your company indicated as supporterCoffee/Refreshments provided by SPS	
Branded Hotel Key Cards	\$2,500
<ul style="list-style-type: none">Increase awareness of your company with this high visibility sponsorship of hotel key cards at the Astor Crowne Plaza Hotel in New Orleans. Artwork to be provided by the sponsor. Cost includes design, production and distribution of 2 cards per room.	
Room Drop	\$1,500
<ul style="list-style-type: none">Provide literature/material /items to each attendee's hotel room. Provide pre stuffed bags, which will be delivered by the hotel and placed inside the attendee's hotel room.	
Door Drop	\$1,000
<ul style="list-style-type: none">Provide literature/material to each attendee's hotel room. Provide flat bags with handles to be delivered by the hotel, and hung on the doorknob of each attendee's room.	
Branded WIFI Password	\$1,000
<ul style="list-style-type: none">Increase awareness of your company with the highly visible frequently used WIFI password. Your branded password will be needed to access the internet in in all meeting rooms and the conference space. Maximum 10 letters.	

Don't see a sponsorship opportunity that meets your needs?

Let us work with you to customize a sponsorship tailored to meet your objective.
Please contact Lori Postal at info@southernpainsociety.org or 828-575-9275

CORPORATE MEMBER TIERS

We invite you to become a corporate sponsor of the Southern Pain Society's 37th annual meeting. There are many opportunities to increase your exposure and engagement with our attendees, in addition to highlighting your company, products and services. We want to help you increase your presence and get as much face time as possible with attendees. Let us know how we can help!

	Bronze Corporate Member	Silver Corporate Member Showcase: Reception	Gold Corporate Member Showcase: Breakfast	Platinum Corporate Member Showcase: Lunch
Sponsored article in the SPS e-news				✓
Sponsored blog post on SPS website				✓
Email blast 2 weeks prior to meeting		✓	✓	✓
Poster at supported event		✓	✓	✓
AV Set up and Support		✓	✓	✓
Corporate logo and link on SPS website x1 year	✓	✓	✓	✓
Corporate logo and link in SPS e-news x1 year	✓	✓	✓	✓
Corporate logo listing in meeting materials	✓	✓	✓	✓
6' table top	1	1	1	2
Complimentary vendor badges	3	4	4	4
Recognition at exhibit hall entrance	✓	✓	✓	✓
Complimentary registration at all lectures	3	4	4	4



Jointly provided by


**RECRUIT
TRAIN
RETAIN**
September 29th - October 1st 2023
New Orleans, Louisiana

Exhibitors may attend the educational sessions for free when not exhibiting, if not requesting credit. If a company representative would like to receive credit for the educational sessions attended, there is a \$75 credit fee.

Cancellations received in writing on or before September 1st, 2023 will be subject to a 30% administrative fee. There will be no refunds for cancellations received after this date. The agreement is binding. Payment must be received 2 weeks in advance to be recognized in meeting materials and posters.

Company Name _____

Date: _____

SUPPORT OPTIONS

Please indicate
your choice(s)
with an X.

☐ **PLATINUM CORPORATE MEMBERSHIP TALK**

Includes Sponsorship during lunch on Saturday, September 30th + 4 badges \$ 18,000

GOLD CORPORATE MEMBERSHIP TALK
☐ Includes sponsorship during breakfast Saturday, September 30th + 4 badges \$ 11,000

☐ Includes sponsorship during breakfast Sunday, October 1st + 4 badges \$ 11,000

☐ **SILVER CORPORATE MEMBERSHIP TALK**

Includes sponsorship during reception Friday, September 29th + 4 badges \$ 7,000

☐ **BRONZE CORPORATE MEMBERSHIP**

Includes 3 badges \$ 4,500

BREAK

Includes coffee and refreshments by SPS

☐ Friday afternoon, September 29th + 3 badges + 1 poster

☐ Saturday morning, September 30th + 3 badges + 1 poster \$ 3,000

☐ Saturday afternoon, September 30th + 3 badges + 1 poster

☐ Sunday morning, October 1st + 3 badges + 1 poster

EXHIBIT SPACE
☐ 6-foot tabletop + 2 badges \$ 2,500

☐ 10 x 10 foot vendor space + 3 badges \$ 5,000

BRANDED HOTEL KEY CARDS
☐ 2 per room \$ 2,500

ROOM DROP
☐ Delivered material placed in hotel guest room \$ 1,500

DOOR DROP
☐ Delivered material placed on hotel door knob \$ 1,000

BRANDED WIFI PASSWORD
☐ Your choice of password to be used by everyone in the conference space \$ 1,000

☐ **ADDITIONAL BADGES** for representatives at \$250 each x ____ (number) \$

☐ **CE CREDIT** for representatives at \$75 each x ____ (number) \$

\$

See next page for representative and payment information.

REPRESENTATIVES

Who will be attending on your behalf?

Name	Email
Name	Email
Name	Email
Name	Email

PAYMENT INFORMATION

Your Name	Title
Company Name	
Address	
Phone	Email

- ☐ Check to follow within 2 weeks
 ☐ Payment enclosed
 ☐ Payment by credit
☐ Visa ☐ Mastercard

Card Number	Security code	Exp Date	/
Name on the Card	Signature		

AGREEMENT

I agree to exhibit at the conference, "The Southern Pain Annual Meeting" with the stipulations indicated in the prospectus.

Signature: _____ Date: _____

SEAHEC CME representative: _____ Date: _____

Special needs: Please indicate any conflicting companies or special configuration needed.

Make check payable to SEAHEC.

MAIL CHECK TO:

SEAHEC
 ATTN: Ashley Smeaton
 2511 Delaney Ave
 Wilmington, NC 28403

FAX OR EMAIL FORM

FAX: (866) 368-2700

EMAIL: info@southernpainsociety.org

W9 Available on request SEAHEC Tax ID 85-3777599

QUESTIONS? (828) 575-9275